



COVID-19 Report

**REPORTING PERIOD:
OCTOBER 16 TO OCTOBER 22, 2022
(WEEK 42)**

October 25
Department of Health





SUMMARY

n = 692 New PCR confirmed cases ¹	n = 9 Deaths ¹	n = 78474 Cases are resolved	n = 1067 Cases are active ²
--	-------------------------------------	--	--

n = 33 Current hospitalizations ^{2,3} (non-ICU and ICU)	n = 1 Current ICU ^{2,3}	n = 36 Seven-day moving average (hospitalizations)	n = 98 Seven-day moving average (cases)
---	--	---	--

HIGHLIGHTS

- The number of PCR confirmed cases has decreased this week compared to last week.
- The number of hospital admissions for COVID-19 has remained stable this week compared to last week (29).
- The number of active hospitalizations has slightly decreased this week (33) compared to last week (35).
- The number of deaths has increased this week (9) compared to last week (4).
- The highest portion of hospitalizations for COVID-19 is among individuals aged 70-89.
- Individuals that are unprotected by vaccine continue to have the highest rate of COVID-19 ICU admissions.
- Amongst the most recent random sample sequenced for COVID-19:
 - 0% of samples are BA.1.
 - 0% of samples are BA.2.
 - 0% of samples are BA.3.
 - 12% of samples are BA.4.
 - 88% of samples are BA.5.

¹ Reported during Sunday, October 16 to Saturday, October 22, 2022 (week 42).

² Status as of 11:59pm on Saturday, October 22, 2022.

³ Confirmed cases hospitalized for COVID-19.

COVID-19 LABORATORY DATA⁴

Table 1: The total number of PCR (polymerase chain reaction) and positive self-reported POCT (point of care) tests performed for COVID-19 by zone.

Zone	PCR Tests (Change)	Positive POCT (Change)
Zone 1	337296 (+1052)	25896 (+188)
Zone 2	165214 (+775)	18903 (+96)
Zone 3	179892 (+1217)	19214 (+118)
Zone 4	86547 (+408)	4322 (+19)
Zone 5	48537 (+332)	1907 (+21)
Zone 6	71845 (+497)	7223 (+32)
Zone 7	44071 (+363)	3728 (+20)
Total	933402 (+4644)	81193 (+494)

Table 2: Total number of PCR confirmed COVID-19 cases.

Zone	Current reporting week	Cumulative confirmed	Number of resolved	Number of deceased	Number of active ⁵	Seven-day moving average
Zone 1	192	25015	24548	173	294	27
Zone 2	125	17741	17453	101	187	18
Zone 3	143	15356	15029	98	229	20
Zone 4	51	6511	6338	77	96	7
Zone 5	54	3182	3080	34	68	8
Zone 6	92	7572	7373	66	133	13
Zone 7	35	4749	4653	36	60	5
Total	692	80126	78474	585	1067	98

⁴ Source: George Dumont Laboratory extracts and self-reported POCT database

⁵ Status as of 11:59pm on Saturday, October 22, 2022



Figure 1: Seven-day moving average of PCR confirmed COVID-19 cases by report date from December 5, 2021, to October 22, 2022.

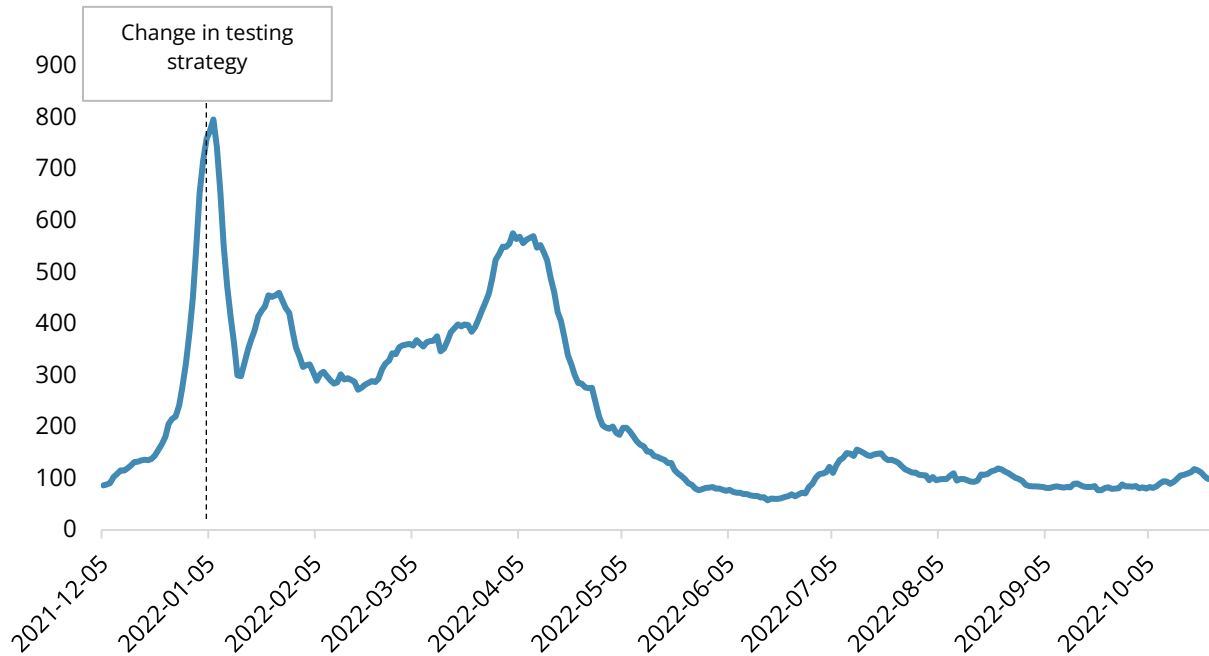


Figure 2: Seven-day moving average of PCR confirmed COVID-19 cases by zone and report date from December 5, 2021, to October 22, 2022.

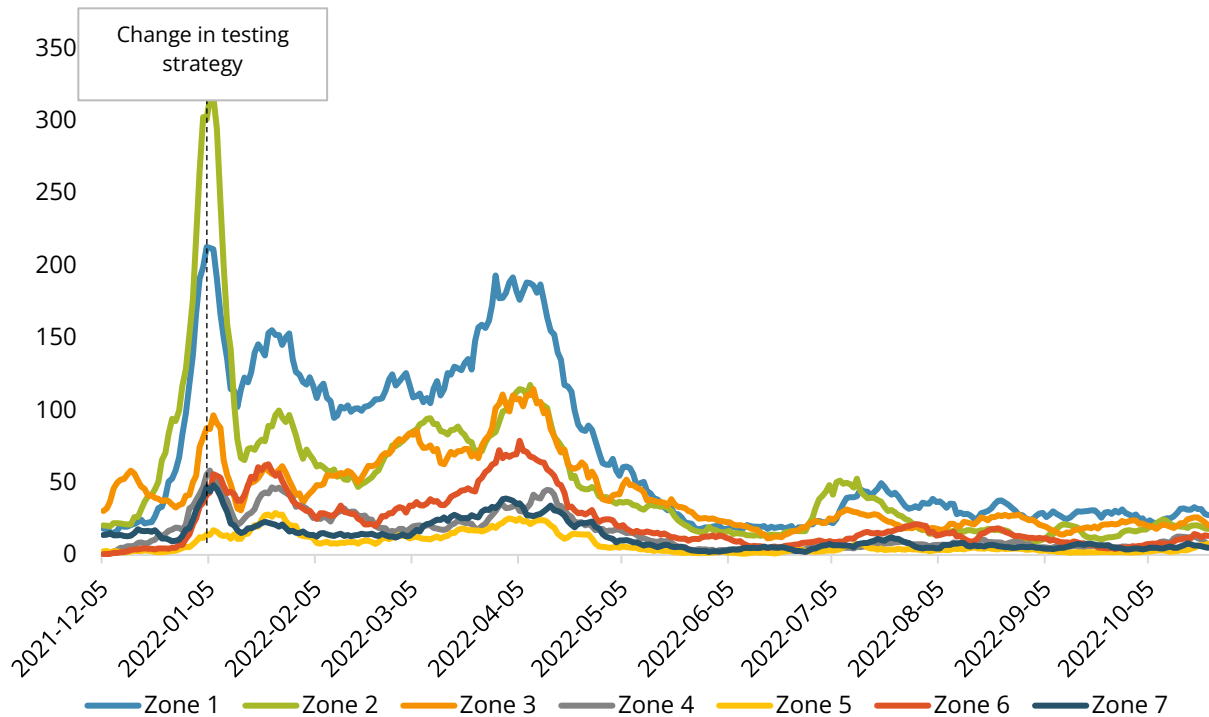


Table 3: Demographics of PCR confirmed COVID-19 cases in New Brunswick by reporting week, current and previous, and cumulative, up to October 22, 2022.

Age range	Current Reporting Week		Previous Reporting Week		Cumulative	
	Number	Percent	Number	Percent	Number	Percent
< 10 years old	19	2.7%	19	2.5%	4647	5.8%
10 - 19 years old	6	0.9%	7	0.9%	4366	5.4%
20 - 29 years old	62	9.0%	66	8.8%	10786	13.5%
30 - 39 years old	91	13.2%	91	12.2%	11567	14.4%
40 - 49 years old	91	13.2%	99	13.3%	11195	14.0%
50 - 59 years old	138	19.9%	155	20.7%	13860	17.3%
60 - 69 years old	80	11.6%	91	12.2%	10125	12.6%
70 - 79 years old	109	15.8%	116	15.5%	6776	8.5%
80 - 89 years old	66	9.5%	79	10.6%	4740	5.9%
90+ years old	30	4.3%	24	3.2%	2064	2.6%
Total	692	100.0%	747	100.0%	80126	100.0%
Vaccination status ⁶	Number	Percent	Number	Percent	Number ⁷	Percent
Protected	496	71.7%	553	74.0%	46630	65.3%
Unprotected	196	28.3%	194	26.0%	24725	34.7%
Total	692	100.0%	747	100.0%	71355	100.0%

⁶Protected refers to boosted or fully vaccinated less than six months. Unprotected refers to fully vaccinated more than six months, partially vaccinated, and unvaccinated. The protected definition does not include individuals with protection from a previous infection. The definitions of “protected” and “unprotected” are currently under review.

⁷Cases reported since December 5, 2021.

COVID-19 HOSPITALIZATIONS⁸ AND DEATH⁹ SURVEILLANCE

Table 4: Hospitalizations for COVID-19 in New Brunswick, by age groups for reporting week, previous and current, and cumulative (Data up to October 22, 2022).

Age range	Total admissions (non-ICU and ICU)			ICU admissions			Resolved or discharg- ed	Deceased ¹⁰
	Current reporting week	Previous reporting week	Cumulative	Current reporting week	Previous reporting week	Cumulative	Cumulative	Cumulative
< 10 years old	0	1	49	0	0	1	49	0
10 - 19 years old	2	1	19	0	1	2	18	0
20 - 29 years old	1	0	45	1	0	14	42	3
30 - 39 years old	0	1	55	0	0	12	50	5
40 - 49 years old	0	1	119	0	0	42	111	14
50 - 59 years old	2	4	213	0	0	63	197	22
60 - 69 years old	5	5	350	0	1	98	320	57
70 - 79 years old	8	12	482	1	0	107	413	158
80 - 89 years old	8	4	383	0	0	42	320	182
90+ years old	3	0	154	0	0	10	111	144
Total	29	29	1869	2	2	391	1631	585

⁸ Hospitalizations (including ICU admissions) are individuals that are hospitalized for COVID-19.

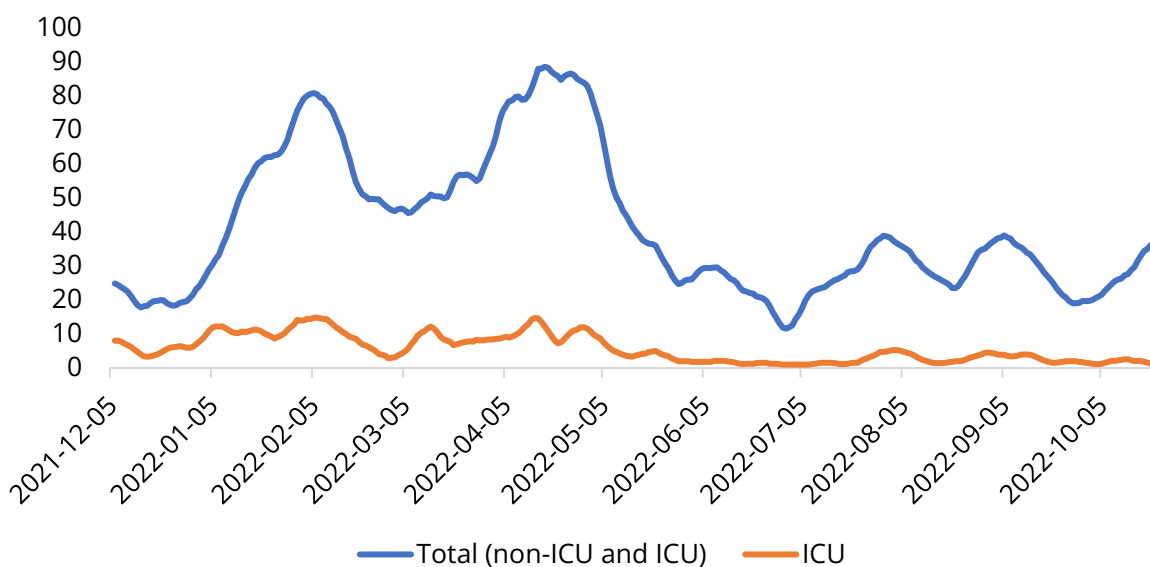
⁹ Deaths are those where COVID-19 was a primary or contributing factor to cause of death as per the attending physician.

¹⁰ Deceased cases reported within and outside of hospital.

Table 5: Vaccination status, proportion, and rate per 100,000 for hospitalized and deceased cases reported since December 5, 2021 (week 49).

Vaccination status ¹¹	Hospitalizations (non-ICU and ICU)			ICU			Deceased		
	N	%	Rate per 100,000	N	%	Rate per 100,000	N	%	Rate per 100,000
Protected	869	55.0%	213.5	109	42.1%	26.8	273	62.5%	67.1
Unprotected	710	45.0%	206.6	150	57.9%	43.6	164	37.5%	47.7
Total	1579	100.0%	210.3	259	100.0%	34.5	437	100.0%	58.2

Figure 3: Seven-day moving average of hospitalizations for COVID-19 since December 5, 2021 (week 49).



¹¹Protected refers to boosted or fully vaccinated less than six months. Unprotected refers to fully vaccinated more than six months, partially vaccinated, and unvaccinated. The protected definition does not include individuals with protection from a previous infection. The definitions of “protected” and “unprotected” are currently under review.



National and International COVID-19 Activity

CANADA

- Case counts have remained relatively stable at the national level.
- Deaths have decreased over the last few weeks.

INTERNATIONAL

- Maine cases are showing a slow and slight upward trend; currently at a 275 7-day average, whereas the 7-day averages were hovering around the low 200 range over the summer.
- Global case counts have declined slightly after a few weeks of stable case counts. There were roughly 2.1 million cases last week.
 - Please note, case and death data for the Regions of the Americas and Africa are incomplete.
 - All regions are showing decreasing or stable case counts.
 - Germany and France have the two highest new case counts in the last 7 days, followed by Italy, China, and Japan.
- Global deaths continue to decrease since the previous week.
- XBB and BQ.1.1 variants are showing significant immune evasion, according to the World Health Organization, and are spreading in Europe and Asia.