

# *District Education Councils*

**PARTNERS IN EDUCATION**—We are all partners in the education of New Brunswick children – the Ministry of Education, District Education Councils (DEC), Parent School Support Committees (PSSC), parents, teachers, district and school staff, and most especially, **our students**.

We are working together to build a world-class public education system, aspiring to achievement and excellence at all times.

## **District Education Councils DO:**

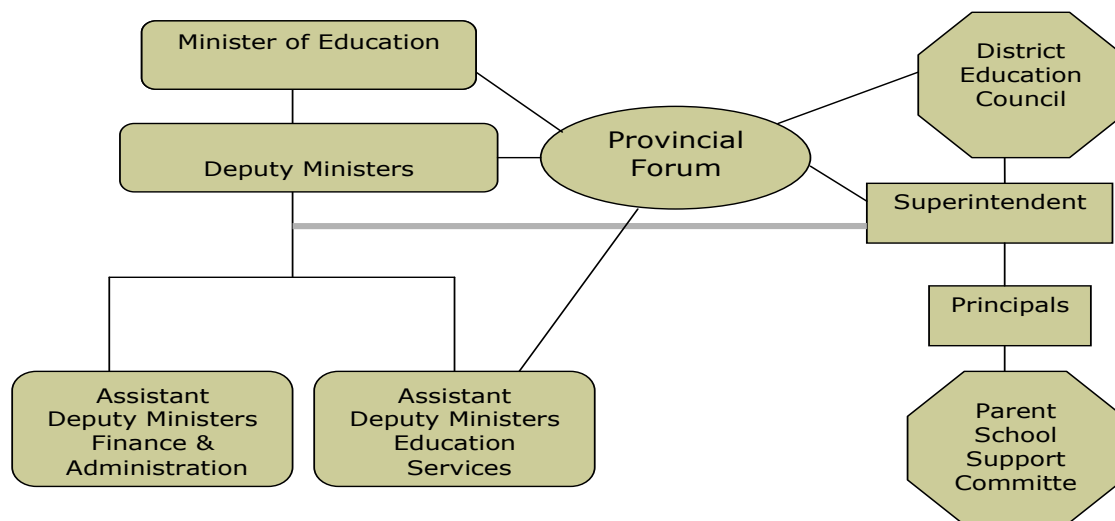
- √ *Hire, direct, and evaluate the Superintendent*
- √ *Practice governance through policy development*
- √ *Develop and monitor District Education Plans*
- √ *Review School Improvement Plans and Performance Reports*
- √ *Monitor budget, expenditures, and trust funds*
- √ *Initiate school establishment and closures; identify construction priorities*
- √ *Maintain linkages with Parent School Support Committees and the community at large*

## **District Education Councils DO NOT:**

- x *Establish school calendar, curriculum, provincial standards, or provincial budgets (Minister's responsibility)*
- x *Participate in day-to-day operations of the school district (Superintendent's responsibility)*



## An Overview of Education in New Brunswick



## Whose Job Is It, Anyway?

Topic	Minister	District Education Council	Superintendent (subject to DEC and provincial policy)
Closure of Schools	Approves school closure	Makes a recommendation on school closure, following community consultation, budget assessment	Facilitates information gathering, prepares report to DEC
Communications	Policy, regulations, guidelines, and directives  Minister's Forums  Stakeholder consultations  Assessment result reporting  Annual report card  School education reviews	Public meetings  Minister's Forums  PSSC training sessions  Professional development sessions  Community linkage, stakeholder consultations  Annual report card  Monitoring reports  Review of District and School Improvement Plans  School education reviews	Public meetings  ED Group meetings  Minister's Forums  Professional development sessions  Community linkage, stakeholder consultations  Annual report card  Monitoring reports  Regular financial reports  District and School Improvement Plans  School education reviews
Discipline & Pupil Appeals	Establishes policy in areas of provincial interest  Establishes authorities, responsibilities, and process for appeals committees	Provides settlement of disputes in school matters between any parent/pupil and school personnel  Serves as or appoints district appeals committee	Facilitates appeals process

<b>Topic</b>	<b>Minister</b>	<b>District Education Council</b>	<b>Superintendent (subject to DEC and provincial policy)</b>
Education Planning	Establishes education and service goals/standards	Establishes and monitors 3-year District Education Plan	Prepares, implements, monitors, and reports on 3-year District Education Plan, achievement results, school improvement plans, school education review results
Establishment of Schools	Approves establishment of a new school	Makes recommendation on establishment of a new school	Prepares proposal for a new school, determines general location
Financial Administration	Divides education budget equitably between linguistic sectors	Establishes and monitors District Expenditure Plan  Submits District Expenditure Plan to Minister in writing	Prepares, implements, monitors and reports on District Expenditure Plan  Expends budget in accordance with policies, regulations and guidelines
Local Programs & Services	Approves locally-developed courses	Establishes and monitors implementation of locally-developed courses	Provides for development and delivery of unique instructional programs, services, courses
Operation and Community Use of Schools, School Property,	All school property is vested in the Minister  Determines sites of schools, district offices, and other buildings  Assesses capital construction priorities of the districts	Reviews and authorizes annual capital construction priorities and major repair reports	Prepares and presents capital construction priorities and major repair reports  Operates schools, has management, care, and control of school property  Makes school property available for community use
School Privileges and Placement	Provides free school to residents aged 5-21  Establishes placement policy for specific learner groups (kindergarten, special needs, international)	Establishes and monitors policies related to school privileges and placement	Admits students, records and reports on enrollment  Determines placement of pupils in classes, grades, programs, services, and schools according to student needs and district resources
Teacher Education & Professional Development	Provides system of teacher education and certification  Oversees professional development	Reviews professional development report	Provides local professional development opportunities, training modules  Reports on professional development to DEC
Transportation	Provides safety framework through legislation  Purchases new buses  DOT provides maintenance	Monitors to ensure regulations and policies are in compliance	Makes arrangements for student conveyance (bus routing, stops, catchment areas)  Reports on compliance with regulations and policies (daily inspections, etc.)

## What Do You Want Me To Do?

As a member of a District Education Council (DEC) , you will be expected to :

- √ Participate in all meetings
- √ Support open, honest communication
- √ Respect the majority decisions of the DEC
- √ Maintain high ethical standards and respect for others
- √ Declare and avoid any appearance of conflict of interest
- √ Consult students on issues that impact them
- √ Build a positive learning environment
- √ Limit discussions to district-wide issues—not discuss individual or personnel issues
- √ Resolve issues in the best interest of all students and the entire school community
- √ Build successful relationships and support within the community
- √ Work collectively and collaboratively through established DEC and provincial policies

## How Will I Do That?

Using policy governance, District Education Councils (DEC) set strategic direction by establishing policies which are regularly monitored to ensure goals are met, risks are managed, and resources are used responsibly. DEC's delegate the daily operation of the district to the Superintendent, their only employee. DEC's are bodies corporate, can sue or be sued.

**Governance Process**—the DEC defines its work and how it will be carried out to maintain accountability, performance and linkages to the public; the DEC has authority only when acting as a group (one voice).

**Ends**—the DEC sets the direction, monitors the progress, and defines the results to be achieved by the Superintendent, from a long-term perspective

**Executive Limitations**—the DEC sets limits and controls on the Superintendent's decisions, by stating what the Superintendent cannot do without DEC approval

**Council-Superintendent Linkage**—the DEC establishes the manner, process, and timelines for the Superintendent's performance on Ends and Executive Limitations policies

*Thank you for your interest in BEing a District Education Council member.  
The children will appreciate your efforts!*

## WANT TO KNOW MORE?

Please contact Nancy Whyte, DEC Administrator:

By phone at (506) 453-2618 or toll free at 1-877-331-3037;

By e-mail at [nancy.whyte@gnb.ca](mailto:nancy.whyte@gnb.ca);

Online to <http://www.gnb.ca/education> or <http://www.decnb.ca>;

By mail at Department of Education, 227-250 King Street, Fredericton, NB E3B 9M9