

Department of Natural Resources, Minerals, Policy and Planning Division
Nouveau Brunswick
Mines, Policy and Planning Division des Ressources Naturelles, des Minéraux, des Politiques et de la Planification

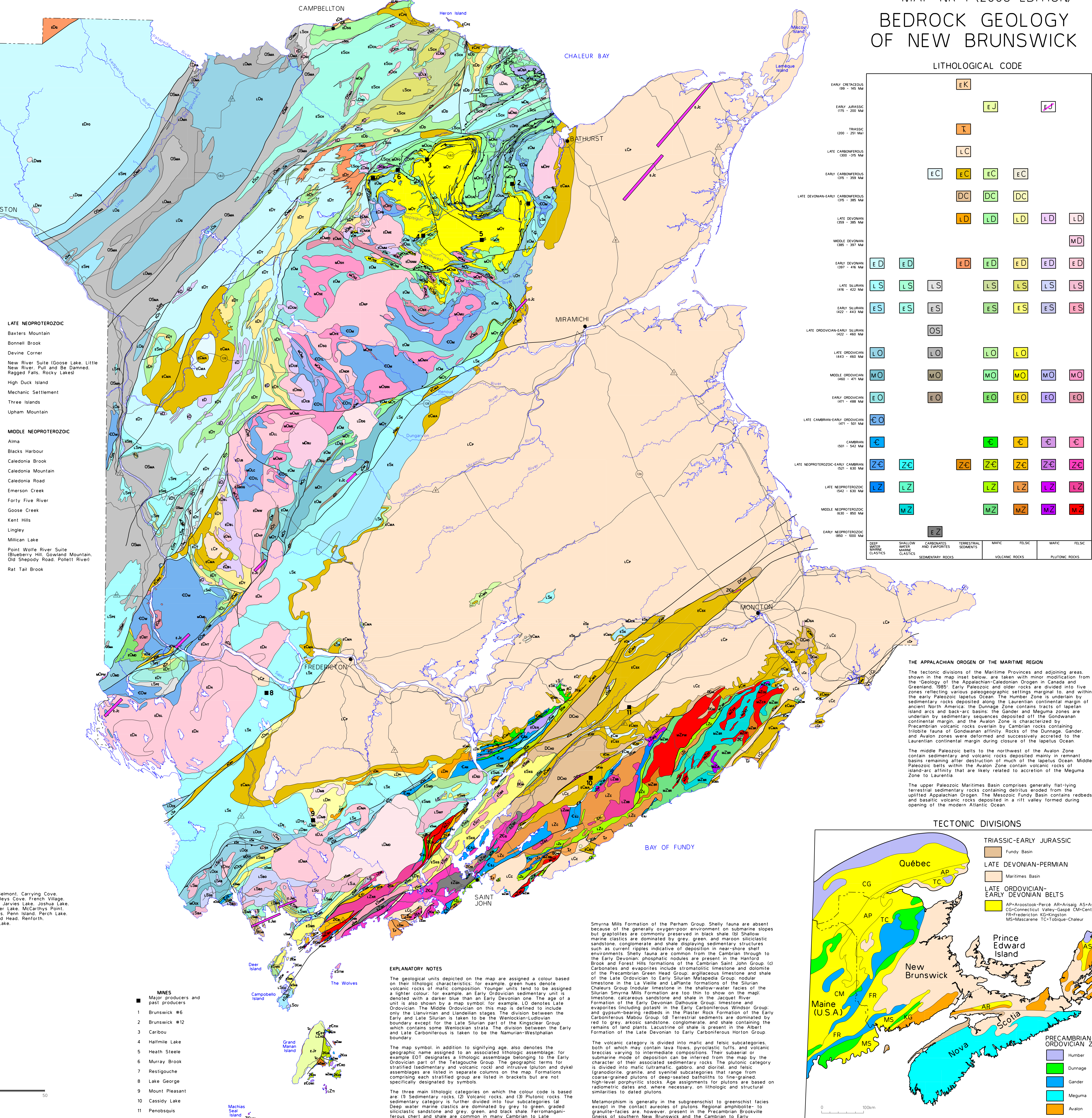
This bedrock geological map of New Brunswick is a revised version of map plate NR-1 (2000 edition) that incorporates the results of recent field work... The base map was reproduced from digital topographic base maps from Service New Brunswick Digitization by K.J. Mersereau...

RECOMMENDED CITATION
New Brunswick Department of Natural Resources, 2008
Bedrock Geology of New Brunswick, Minerals, Policy and Planning Division.
Map NR-1 (2008 Edition) Scale 1:500 000 (Revised December 2008)

INTRUSIVE ROCKS

Table listing intrusive rock units with codes and names, categorized by geological period: EARLY JURASSIC, LATE DEVONIAN, MIDDLE DEVONIAN, EARLY DEVONIAN, EARLY ORDOVICIAN, EARLY CAMBRIAN, NEOPROTEROZOIC TO CAMBRIAN, and MINES.

Table listing intrusive rock units with codes and names, categorized by geological period: LATE SILURIAN, LATE NEOPROTEROZOIC, EARLY SILURIAN, EARLY ORDOVICIAN, EARLY CAMBRIAN, and MIDDLE ORDOVICIAN.



MAP NR-1 (2008 EDITION)
BEDROCK GEOLOGY
OF NEW BRUNSWICK

LITHOLOGICAL CODE table with columns for geological periods and codes, and a legend for rock types: SHALLOW WATER CLASTICS, CARBONATES AND SILICATE ROCKS, METAMORPHIC ROCKS, VOLCANIC ROCKS, and PLUTONIC ROCKS.

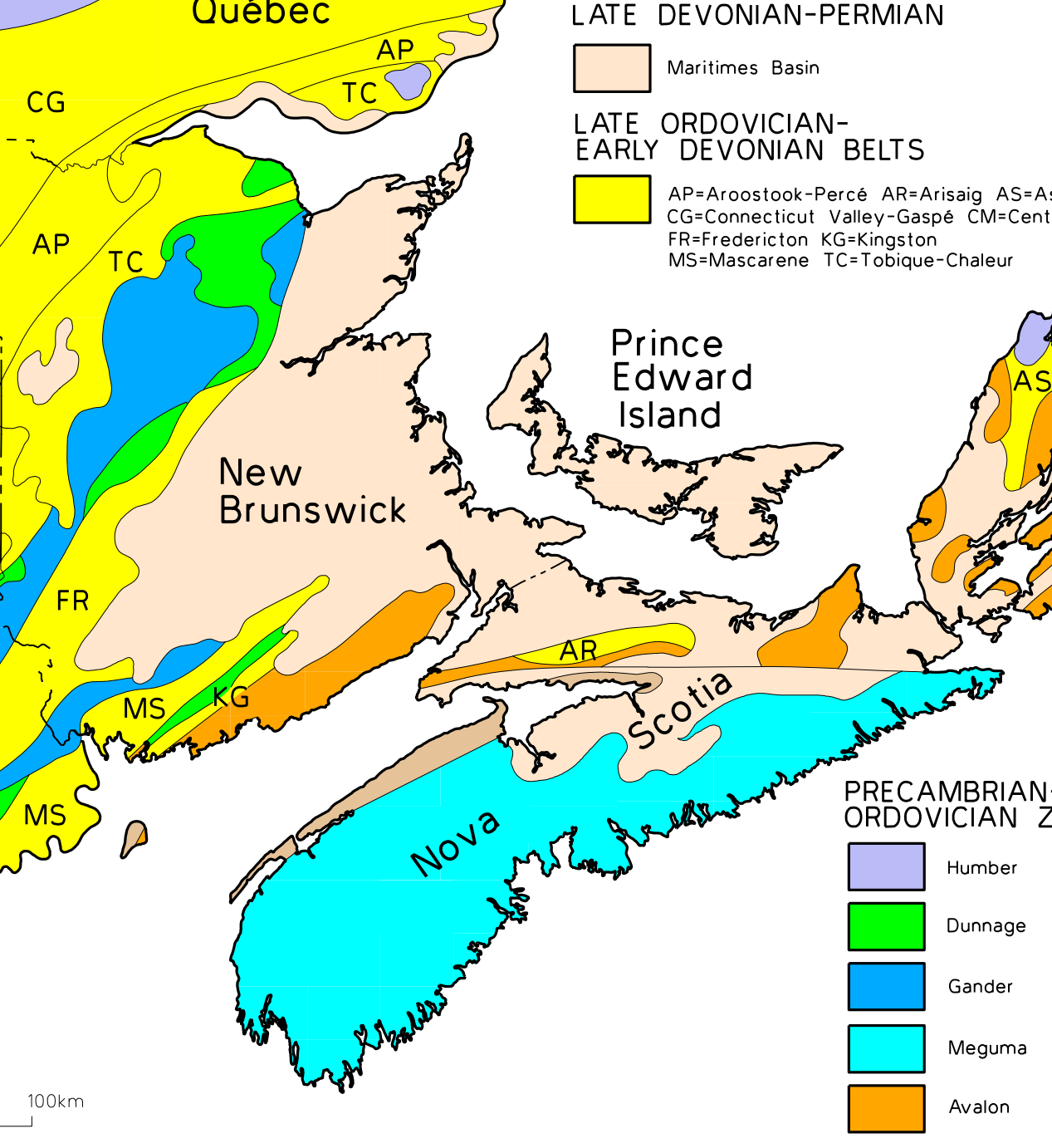
THE APPALACHIAN OROGEN OF THE MARITIME REGION

The tectonic divisions of the Maritime Provinces and adjoining areas shown in the map inset below are taken with minor modification from the 'Geology of the Appalachian-Caledonian Orogen in Canada and Greenland'...

The middle Paleozoic belts to the northwest of the Avalon Zone contain sedimentary and volcanic rocks deposited mainly in remnant basins remaining after destruction of much of the orogenic zone...

The upper Paleozoic Maritimes Basin complex generally flat-lying terrestrial sedimentary rocks containing detritus eroded from the uplifted Appalachian orogenic zone...

TECTONIC DIVISIONS



STRATIFIED ROCKS

Table listing stratified rock units with codes and names, categorized by geological period: EARLY CRETACEOUS, EARLY JURASSIC, TRIASSIC, EARLY CARBONIFEROUS, LATE CARBONIFEROUS, LATE DEVONIAN-EARLY CARBONIFEROUS, LATE DEVONIAN, EARLY DEVONIAN, EARLY SILURIAN, EARLY ORDOVICIAN, EARLY CAMBRIAN, MIDDLE ORDOVICIAN, EARLY ORDOVICIAN, EARLY CAMBRIAN, LATE NEOPROTEROZOIC-EARLY CAMBRIAN, LATE NEOPROTEROZOIC, MIDDLE NEOPROTEROZOIC, EARLY NEOPROTEROZOIC, and CAMBRIAN.

EXPLANATORY NOTES

The geological units depicted on the map are assigned a colour based on their lithologic characteristics... The map symbol in addition to signifying age also denotes the geographic name assigned to an outcrop...

Smalls Mills Formation of the Perham Group... The volcanic category is divided into mafic and felsic subcategories...

Metamorphism is generally in the subgreenschist to greenschist facies except in the contact aureoles of plutons...

The three main lithologic categories on which the colour code is based are: (1) Sedimentary rocks, (2) Volcanic rocks, and (3) Plutonic rocks...

