

WEEKLY NEW BRUNSWICK INFLUENZA REPORT

Reporting period: March 10 to March 16 2019 (week 11)

Summary

In New Brunswick, influenza activity remained stable in week 11

New Brunswick:

- There have been 107 positive influenza cases in week 11. To date this season, 2167 cases have been reported, 216 influenza A (H1N1)pdm09, 1924 influenza A (unsubtyped), 12 influenza A (H3) and 15 influenza B.
- There have been 14 influenza associated hospitalizations during week 11. So far this season, 439 influenza associated hospitalizations have been reported and 22 deaths.
- The ILI consultation rate was 8.1 consultations per 1,000 patients visits in week 11. The ILI rate was below the expected levels for this time of year.
- One new influenza outbreak was reported in week 11 (nursing home). So far this season, 14 influenza outbreaks have been reported in nursing homes, 5 in Hospitals, 2 in other settings (Residential facility and Assisted Living) and 11 ILI outbreaks have been reported in schools.

Canada:

- Influenza activity continues to be reported in almost all regions in Canada but is circulating at higher levels in eastern regions.
- Detections of influenza A(H3N2) have been steadily increasing since mid-January and accounted for 64% of subtyped influenza A detections this week; however, influenza A(H1N1)pdm09 remains the predominant subtype to date this season.
- There is currently very little influenza B circulation compared to previous seasons.
- The World Health Organization has released the [recommended composition](#) of the influenza vaccine for use in the 2019-2020 northern hemisphere influenza season. The recommended strain was changed for each of the A(H1N1)pdm09 and A(H3N2) components compared to this year's vaccine.

International:

Seasonal influenza:

In the temperate zone of the northern hemisphere influenza activity continued to be reported. In North America, influenza activity continued but in recent weeks influenza A(H3N2) was the dominant virus, followed by influenza A(H1N1)pdm09. In Europe, influenza activity decreased across the continent, with two thirds of countries still above baseline for influenza-like illness activity. Influenza A viruses co-circulated. In North Africa, influenza activity was still reported in some countries. In Western Asia, influenza activity appeared to decrease overall, with exception of some countries where activity remained elevated. In East Asia, influenza activity appeared to decrease overall, with influenza A(H1N1)pdm09 virus predominating. In Southern Asia, influenza activity remained elevated overall with influenza A viruses predominating. In the Caribbean, Central American countries, and the tropical countries of South America, influenza and RSV activity were low in general. In the temperate zones of the southern hemisphere, influenza activity remained at inter-seasonal levels, with the exception of some parts of Australia where influenza activity remained above inter-seasonal levels. Worldwide, seasonal influenza A viruses accounted for the majority of detections.

Effectiveness of 2018-2019 influenza vaccine for influenza A(H1N1)pdm09:

- Based on a recently published [Canadian influenza vaccine effectiveness study](#), mid-season vaccine effectiveness estimates indicate that this year's flu shot is approximately 72%(95%CI: 60 to 81%) effective against the predominant circulating strain. The study confirmed that significant protection was observed in all age groups, especially young children who have been disproportionately affected by influenza this season.

Emerging Respiratory Viruses:

- MERS CoV:
 - WHO: http://www.who.int/csr/disease/coronavirus_infections/en/
 - CDC: <http://www.cdc.gov/coronavirus/mers/>
 - Updated Risk Assessment (August 2018): http://www.who.int/csr/disease/coronavirus_infections/risk-assessment-august-2018.pdf?ua=1
- Avian Influenza:
 - WHO: www.who.int/csr/disease/avian_influenza/en/index.html

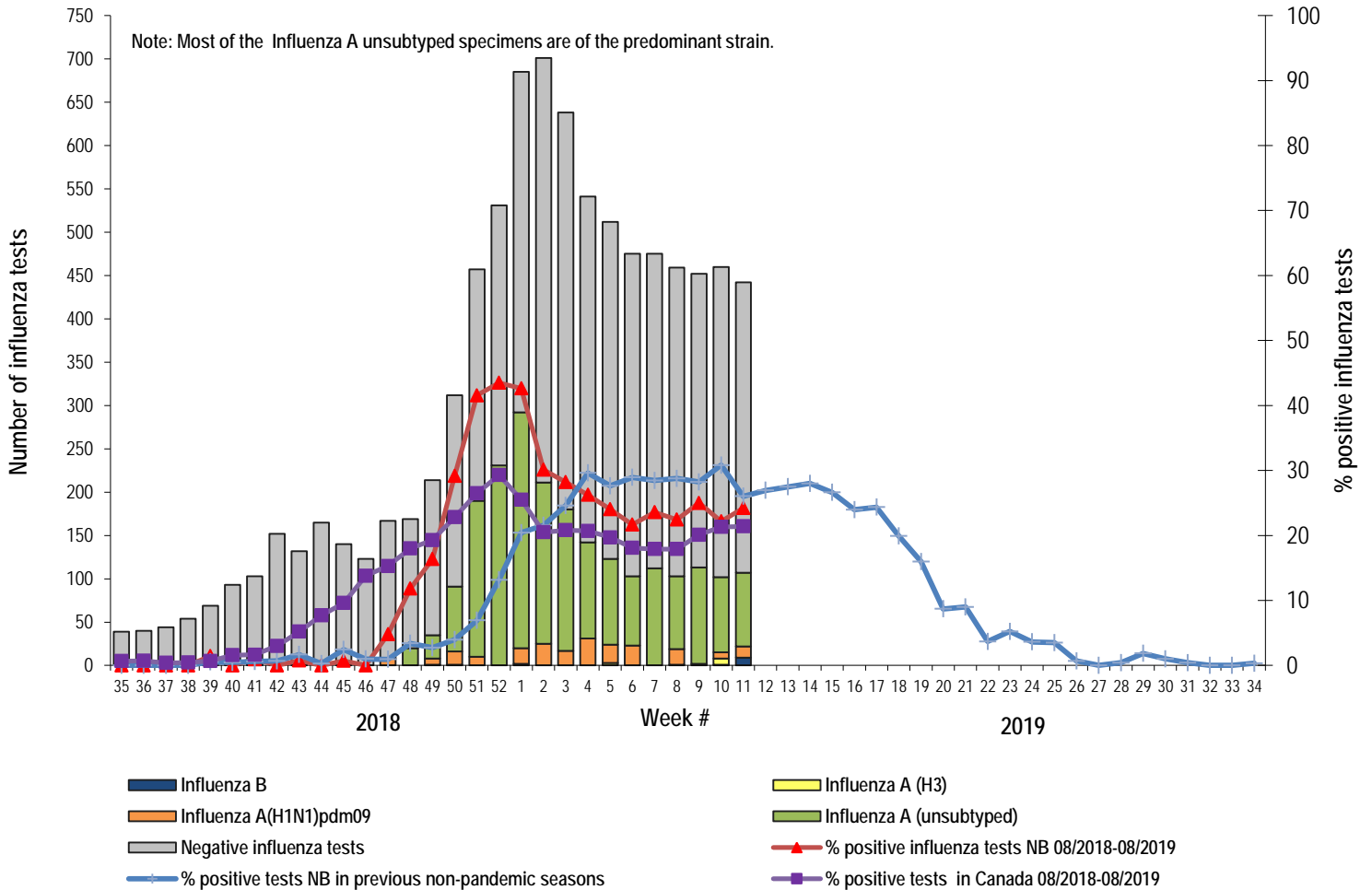
1) Influenza Laboratory Data¹

- Influenza activity remained stable in week 11.
- One-hundred-seven influenza cases were reported during week 11, 85 were A (unsubtyped), 13 were influenza A(H1N1)pdm09 and 9 were an influenza B.

¹ Surveillance specimens are submitted by recruited New Brunswick Sentinel Practitioner Influenza Network (NB SPIN) practitioners, which are comprised of sites in Emergency Rooms, in Family Practice, in First Nations communities, in Nursing Home, in Universities and in Community Health Centers. Diagnostic specimens are submitted by physicians in the community/hospital setting. Influenza laboratory data is comprised of results from surveillance and diagnostic specimens. All laboratory specimens are tested using a real-time PCR assay, which is a rapid detection method designed for detection of all known variants of influenza A and B. All laboratory-confirmed cases are reported for the week when laboratory confirmation was received.

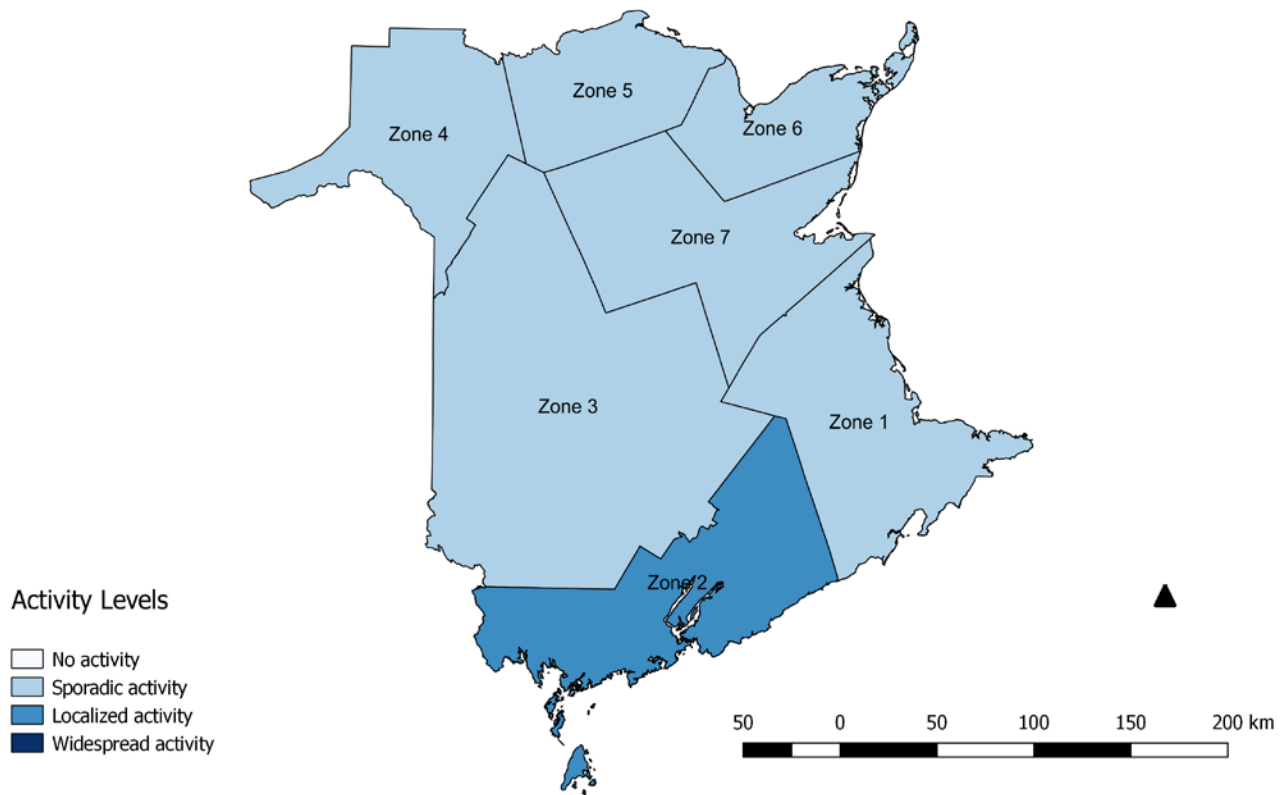
- Since the beginning of the season, 2167 influenza cases have been reported, 216 influenza A(H1N1)pdm09, 1924 influenza A(unsupported), 12 influenza A (H3) and 15 influenza B.

Graph 1: Number and percent of positive influenza specimens² in New Brunswick by week, up to March 16, 2019 (data source: G. Dumont Lab results)



² Total number of positive influenza tests is higher than number of cases since some individuals had co-infection of A & B simultaneously.

Figure 2: Influenza/ILI activity levels³ by Health Zones, in New Brunswick, for week 11, season 2018/2019.



³ No activity is defined as no laboratory-confirmed influenza detections in the reporting week, however, sporadically occurring ILI may be reported. Sporadic activity is defined as sporadically occurring ILI and lab confirmed influenza detection(s) with no outbreaks detected within the influenza surveillance region. Localized activity is defined as evidence of increased ILI with lab confirmed influenza detection(s) and outbreaks in schools, hospitals, residential institutions and/or other types of facilities occurring in less than 50% of the influenza surveillance region. Widespread activity is defined as evidence of increased ILI with lab confirmed influenza detection(s) and outbreaks in schools, hospitals, residential institutions and/or other types of facilities occurring in greater than or equal to 50% of the influenza surveillance region.

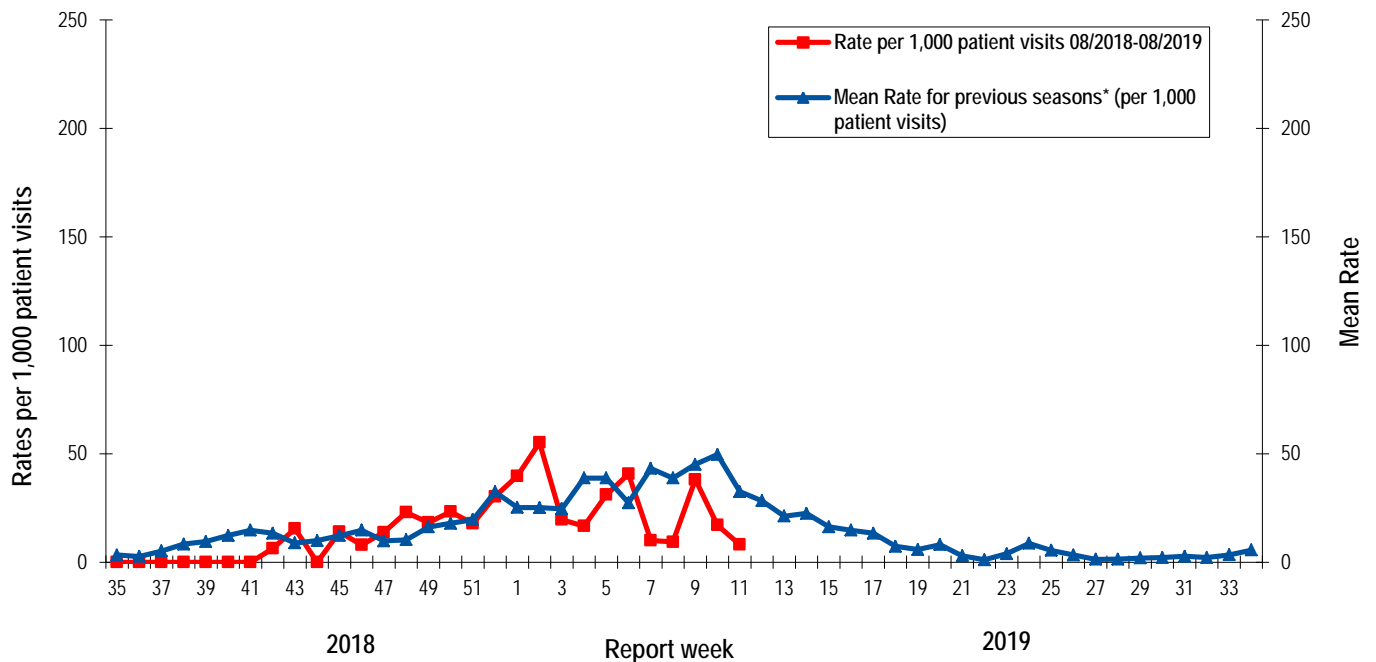
Table 1: Positive influenza cases by Health Region, in New Brunswick for reporting week, cumulative current and previous seasons.
 (data source: G. Dumont lab results up to March 16, 2019)

Zone	Reporting period: March/10/2019–March/16/2019						Cumulative: (2018/2019 season) Aug./26/2018 –Mar./16/2019						Cumulative: (2017/2018 season) Aug./27/2017 –Aug./25/2018					
	A					B	A & B co- infection			A					B	A & B co- infection		
	A(H3)	(H1N1) pdm09	Unsubty ped/ Other	A Total	Total	Total	A(H3)	(H1N1) pdm09	Unsubty ped/ Other	A Total	Total	Total	Total	(H3)	(H1N1) pdm09	Unsubty ped/ Other	A Total	Total
Zone 1	0	4	44	48	2	0	4	77	979	1060	5	0	102	12	575	689	756	11
Zone 2	0	3	17	20	2	0	0	34	216	250	2	0	32	3	126	161	158	1
Zone 3	0	3	13	16	0	0	2	28	210	240	0	0	63	3	194	260	163	3
Zone 4	0	1	1	2	0	0	1	21	122	144	0	0	19	2	53	74	84	0
Zone 5	0	1	0	1	5	0	2	16	80	98	8	0	9	0	8	17	6	0
Zone 6	0	1	7	8	0	0	2	21	168	191	0	0	38	3	75	116	68	0
Zone 7	0	0	3	3	0	0	1	19	149	169	0	0	17	2	72	91	63	0
Total NB	0	13	85	98	9	0	12	216	1924	2152	15	0	280	25	1103	1408	1298	15

2) ILI Consultation Rates⁴

- For week 11, the ILI consultation rate was 8.1 consultations per 1,000 patients visits. The ILI rate was below the expected levels for this time of year.
- During week 11, the sentinel response rate was 18%, for both the FluWatch sentinel physicians and the NB SPIN practitioners.

Graph 2: ILI Consultation Rates in New Brunswick, by report week, season 2018/19 compared to previous seasons*



* The mean rate was based on data from the 1996/97 to 2017/2018 seasons and excludes the Pandemic season (2009/10).

3) ILI and Laboratory-Confirmed Outbreak Data

Table 2: ILI activity/outbreaks in New Brunswick nursing homes and schools for the reporting week, current and previous seasons.

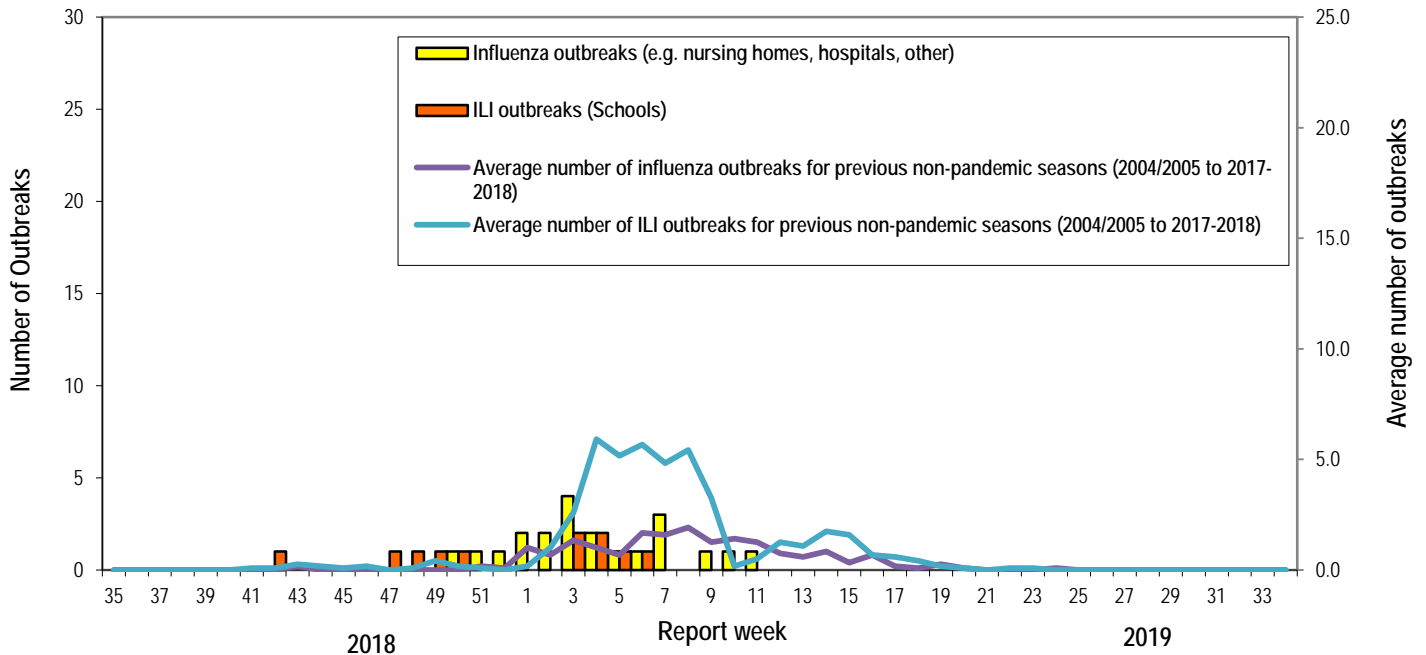
	Reporting period: March/10/2019–March/16/2019			Cumulative # of outbreaks season 2018-2019	Cumulative # of outbreaks season 2017-2018
	Lab-confirmed outbreaks in Nursing homes ⁵	ILI school outbreaks ⁶	Lab-confirmed outbreaks in Other settings ⁴		
Zone 1	0 out of 13	0 out of 74	0	9	9
Zone 2	1 out of 16	0 out of 81	0	8	11
Zone 3	0 out of 14	0 out of 95	0	6	21
Zone 4	0 out of 6	0 out of 22	0	1	1
Zone 5	0 out of 2	0 out of 18	0	0	0
Zone 6	0 out of 9	0 out of 35	0	2	3
Zone 7	0 out of 4	0 out of 27	0	6	3
Total NB	1 out of 64	0 out of 352	0	32	48

⁴ A total of 28 practitioner sites (16 FluWatch sentinel physicians and 12 NB SPIN sites) are recruited this season to report the number of ILI patients and total patient consultations one day during a reporting week.

⁵ Two or more ILI cases within a seven day period, including at least one laboratory-confirmed case of influenza. Outbreaks are reported in the week when laboratory confirmation is received.

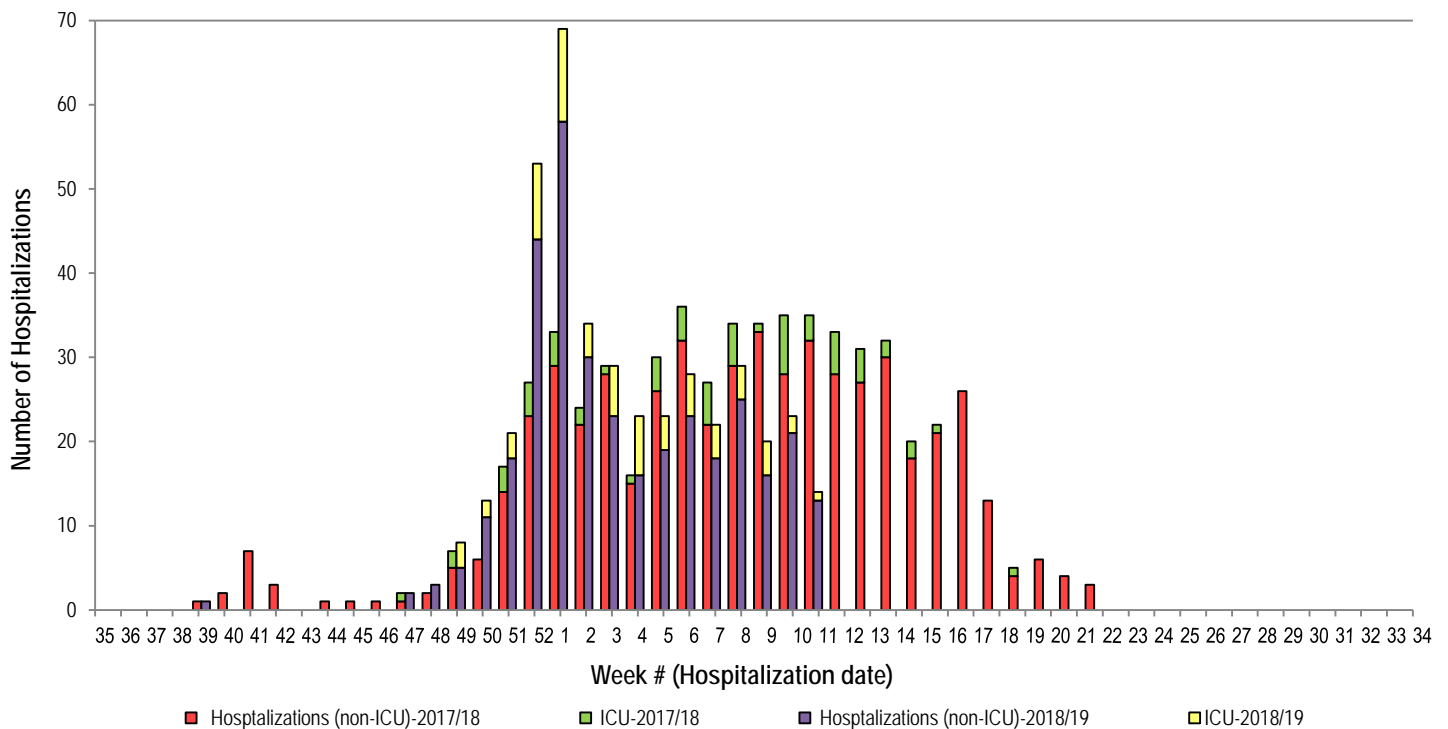
⁶ Schools reporting greater than 10% absenteeism which is likely due to ILI.

Graph 3: Number of Influenza Outbreaks (nursing homes, hospitals, other) and ILI Outbreaks (schools) reported to Public Health in New Brunswick, by report week, season 2018/19.



4) Influenza associated Hospitalization⁷ and Death⁸ Surveillance⁹

Graph 4: Influenza associated Hospitalizations and ICU admissions in New Brunswick, by week of hospitalization for current and past season.*



*Those who had been hospitalized 15 days or more prior to laboratory confirmation date were excluded from the graph

**Twenty-two deaths have been reported so far in season 2018-2019.

⁷ Hospitalizations (including ICU admissions) are influenza associated; they may or may not be due to influenza.

⁸ Deaths are influenza associated; influenza may not be the direct cause of death.

⁹ In early January 2014, the Office of the Chief Medical Officer of Health implemented a new provincial surveillance system in collaboration with the Regional Health Authorities to monitor influenza-associated hospitalizations, intensive care unit admissions and deaths. A standardized Enhanced Surveillance Form is used to collect data on hospitalizations.

National Flu Watch Program - Additional information on influenza activity in Canada and around the world is available on the Public Health Agency of Canada's website at: <http://www.phac-aspc.gc.ca/fluwatch/>

Other Links:

World: http://www.who.int/influenza/surveillance_monitoring/updates/latest_update_GIP_surveillance/en/index.html

Europe: http://www.ecdc.europa.eu/en/healthtopics/seasonal_influenza/epidemiological_data/Pages/Weekly_Influenza_Surveillance_Overview.aspx

PAHO: http://new.paho.org/hq/index.php?option=com_content&task=blogcategory&id=805&Itemid=569

Australia: <http://www.health.gov.au/internet/main/publishing.nsf/Content/cda-surveil-ozflu-flucurr.htm>

New Zealand: http://www.surv.esr.cri.nz/virology/influenza_weekly_update.php

Argentina: <http://www.msal.gov.ar/>

South Africa: <http://www.nicd.ac.za/>

US: www.cdc.gov/flu/weekly/

Prepared by the Communicable Disease Control Unit
Office of the Chief Medical Officer of Health, Tel: (506) 444-3044